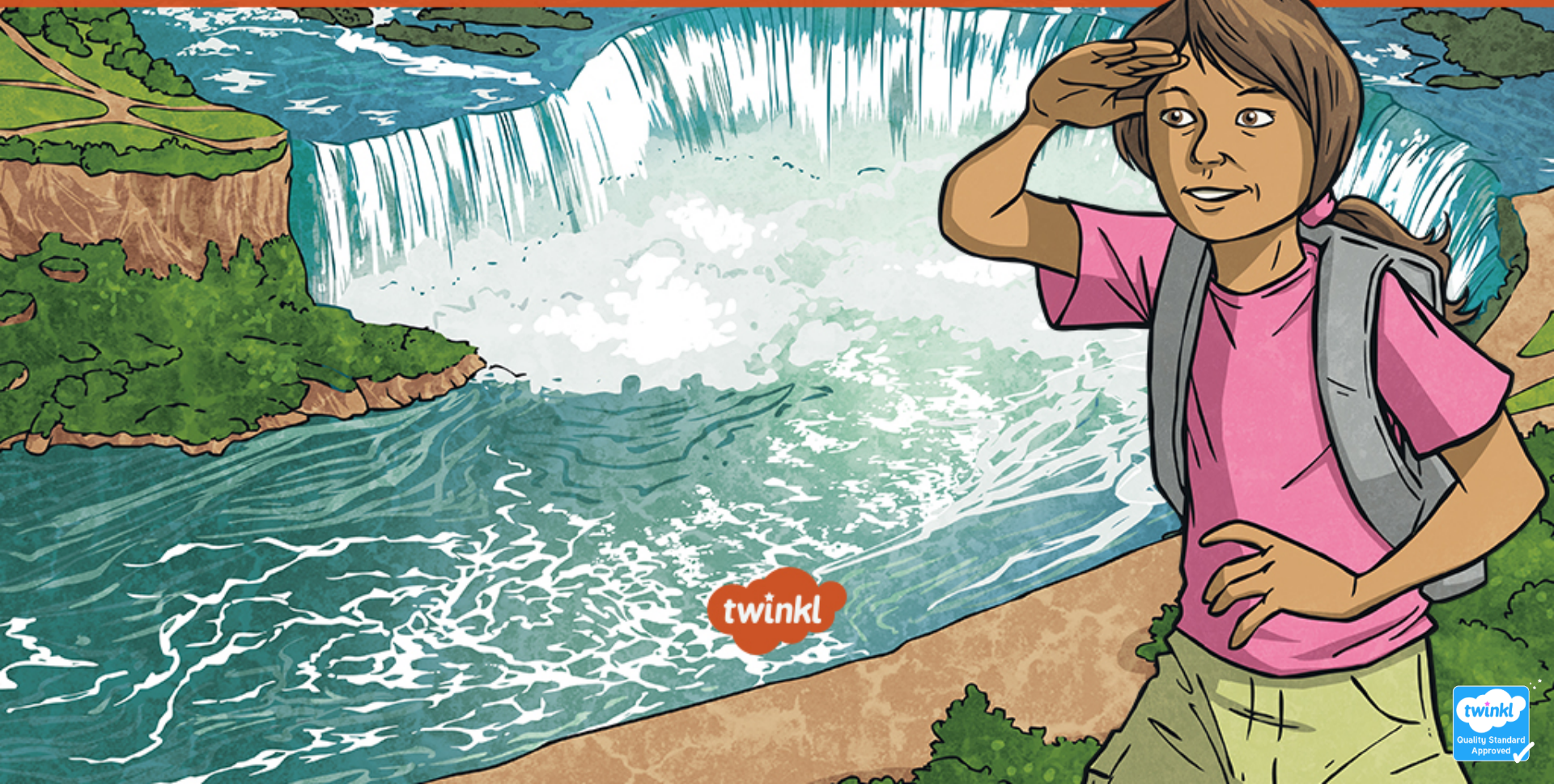


Wonderful Waterfalls

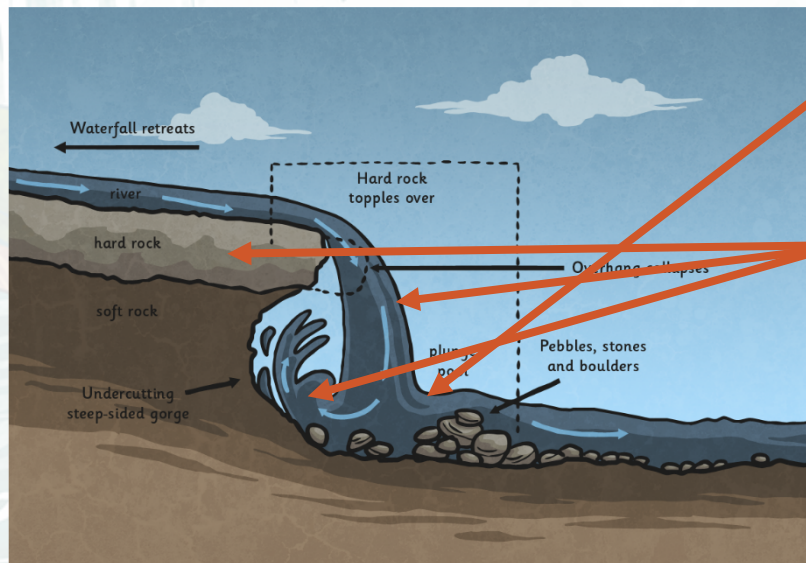
Make Your Own Waterfall



twinkl

What Is a Waterfall?

A waterfall is the part of a river or stream that falls over a steep drop. Sometimes, a plunge pool forms below.



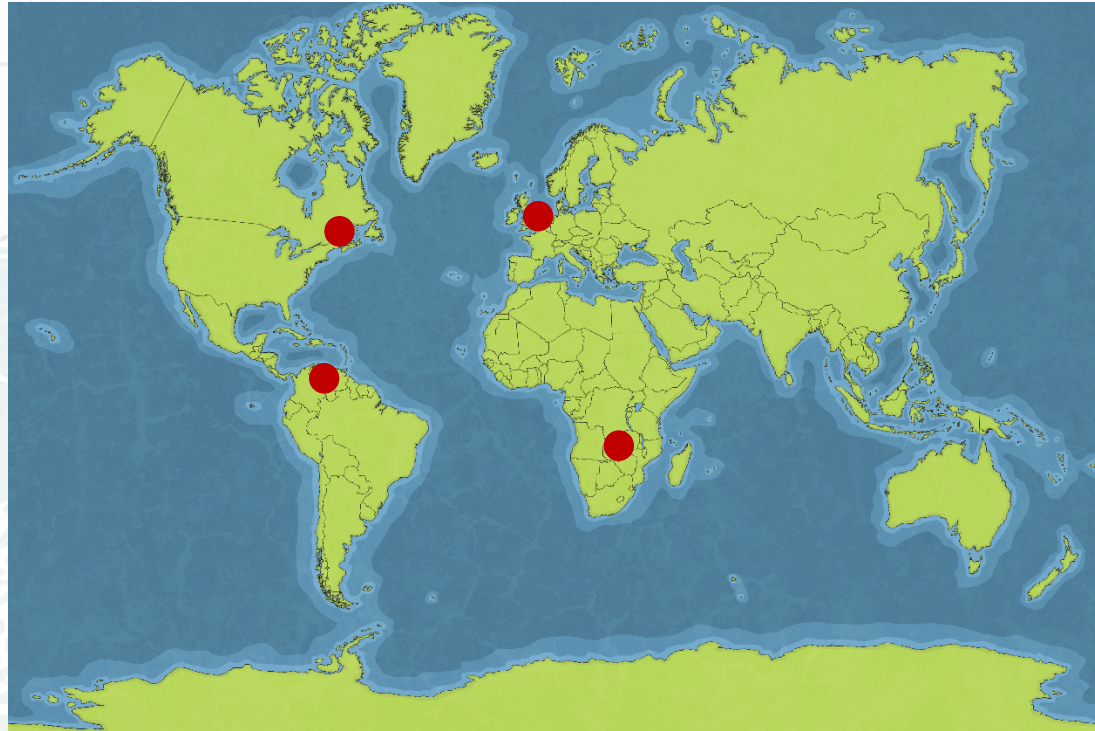
Plunge Pool

As the soft rock layer is worn away, it collapses to form a **plunge pool**.

The rocks in the plunge pool, together with the force of the water, increase the erosion. Sometimes, the hard rock layer collapses too which makes the waterfall retreat upstream. This can form a gorge or narrow valley.

Wonderful Waterfalls

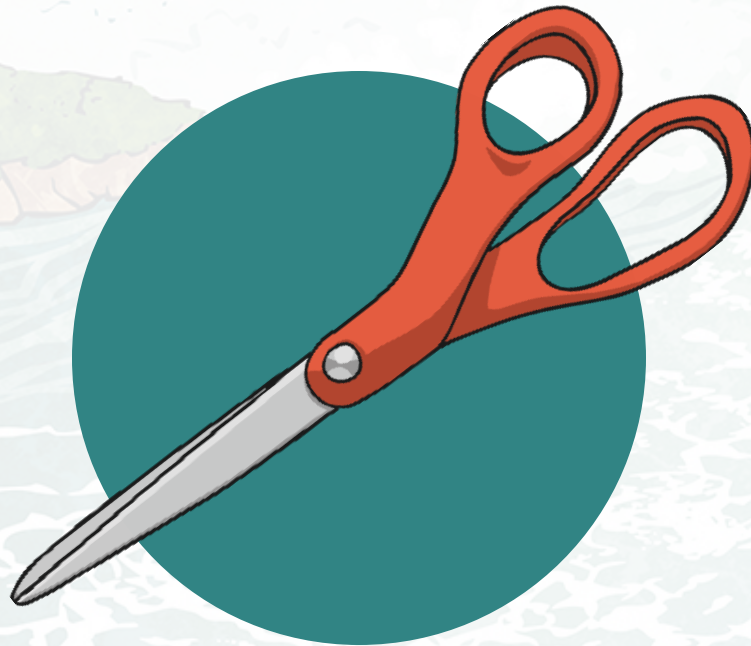
Click to discover some of the waterfalls around the world.
Can you find out about any more?



Make a Pop-Up Waterfall

You will need:

- a waterfall template sheet
- scissors
- coloured pencils

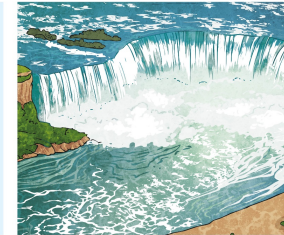


Wonderful Waterfalls

Make your own pop-up waterfall, using this template.

You will need:

- A waterfall template sheet
- Scissors
- Coloured pencils



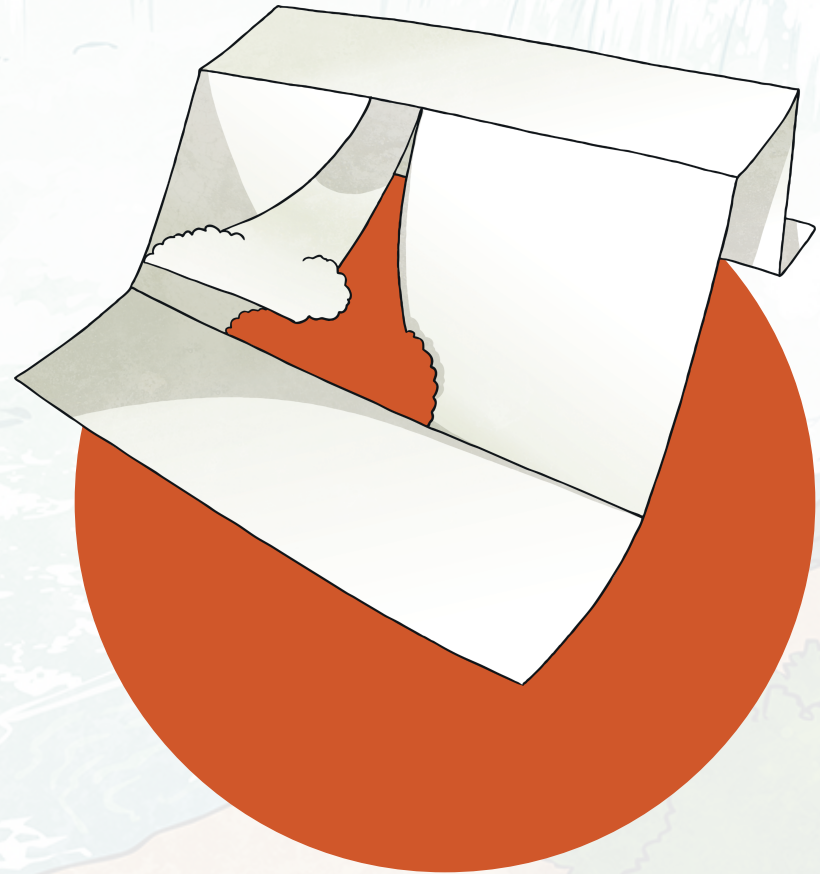
Instructions

1. Fold along the lines on the waterfall template.
2. Placing the sheet flat on a surface, fold the top and bottom lines **towards** you and the middle line the opposite way.
3. You should be able to stand your 'waterfall' up now.
4. At the bottom of the template, beneath the waterfall drop, add rocks to show the plunge pool.
5. Cut out the section for the waterfall drop.
6. Laying the sheet flat again, colour in each part.
 - Use a different colour or shading technique to show the soft rock behind the waterfall and the hard rock on the top section of the waterfall.
 - Use darker colours for the rocks on the plunge pool.
7. Stick the bottom of the cut-out section to the end of the paper.
8. You can stick the top and bottom flap to a piece of paper or card to make it stand more securely. Or, stick it into your topic book by placing the pop-up waterfall over the centre of a double page. Glue the base to the right-hand side page and the back to the left. Open your book to reveal the pop-up waterfall!

Make a Pop-Up Waterfall

Instructions:

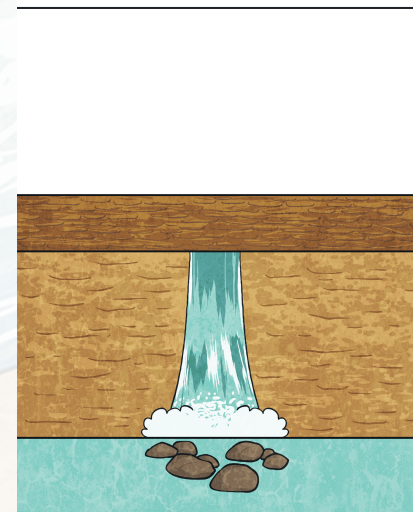
1. Fold along the lines on the waterfall template.
2. Placing the sheet flat on a surface, fold the top and bottom lines **towards** you and the middle lines the opposite way.
3. You should be able to stand your 'waterfall' up now.
4. At the bottom of the template, beneath the waterfall drop, add rocks to show the plunge pool.
5. Cut out the section for the waterfall drop.



Make a Pop-Up Waterfall

Instructions:

6. Laying the sheet flat again, colour in each part.
 - Use a different colour or shading technique to show the soft rock behind the waterfall and the hard rock on the top section of the waterfall.
 - Use darker colours for the rocks on the plunge pool.
7. Stick the bottom of the cut-out section to the end of the paper.
8. You can stick the top and bottom flap to a piece of paper or card to make it stand more securely. Or, stick it into your topic book by placing the pop-up waterfall over the centre of a double page. Glue the base to the right-hand side page and the back to the left. Open your book to reveal the pop-up waterfall!

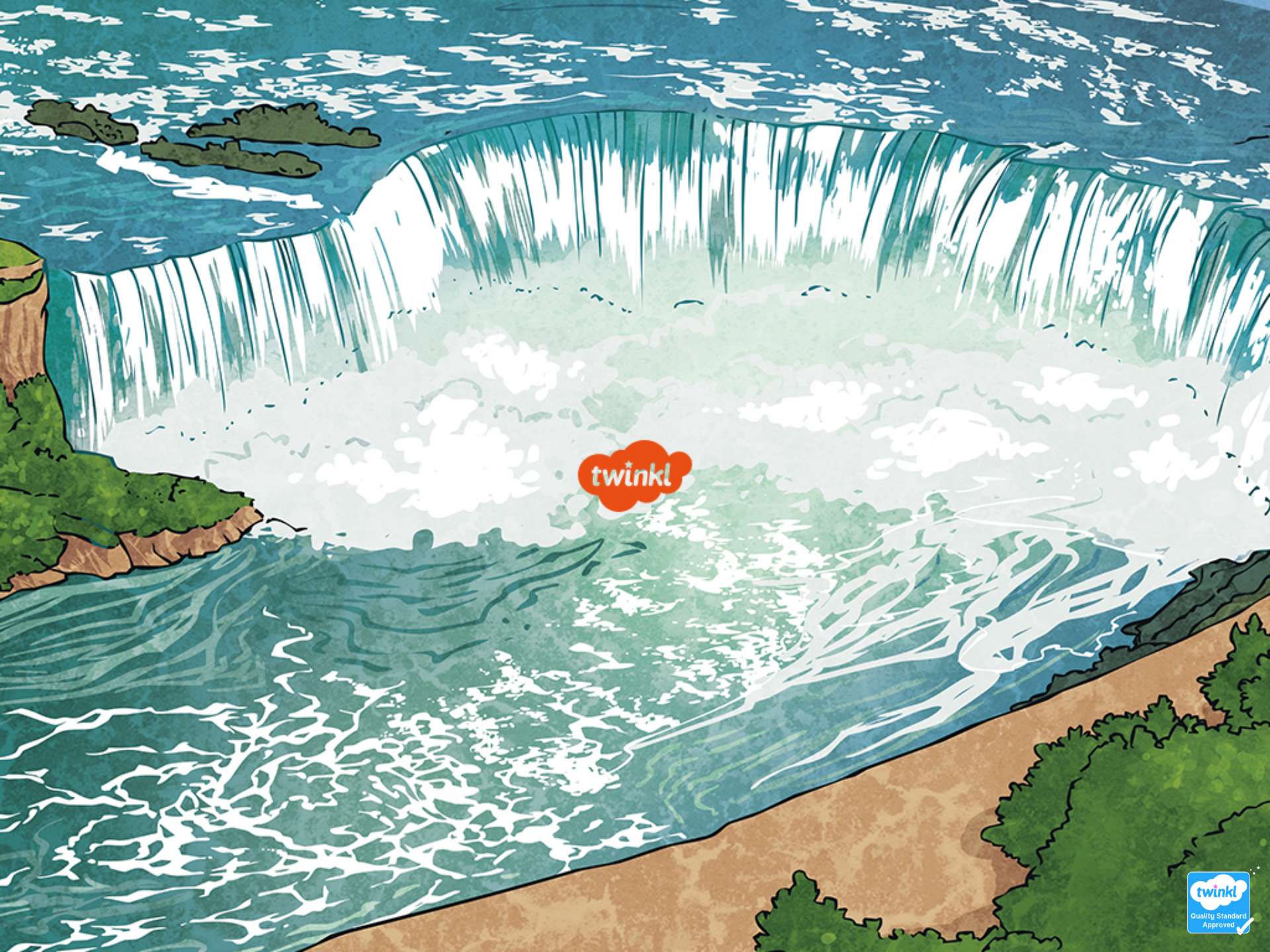


Challenge Yourself

Can you add the following points to your diagram?
Use the Internet or information books to explain each one to a friend.

1. Hard rock
2. Waterfall
3. Soft rock
4. Fallen rocks
5. Plunge pool





twinkl